

Show Home # 250-764-2199
 5498 Mountainside Drive
 Kelowna BC V1W 5G4
 Open Sat—Thur. 12:00-5:00
 Closed Fridays

“Devon”

Please enquire for pricing



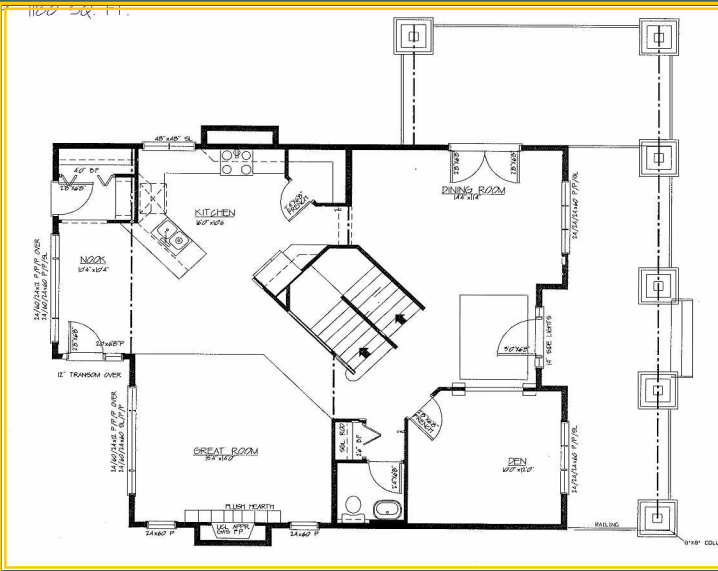
202-5303 Main Street
 Kelowna, BC V1W 4V3
 Office# 250-764-1306
 Fax # 250-764-0996



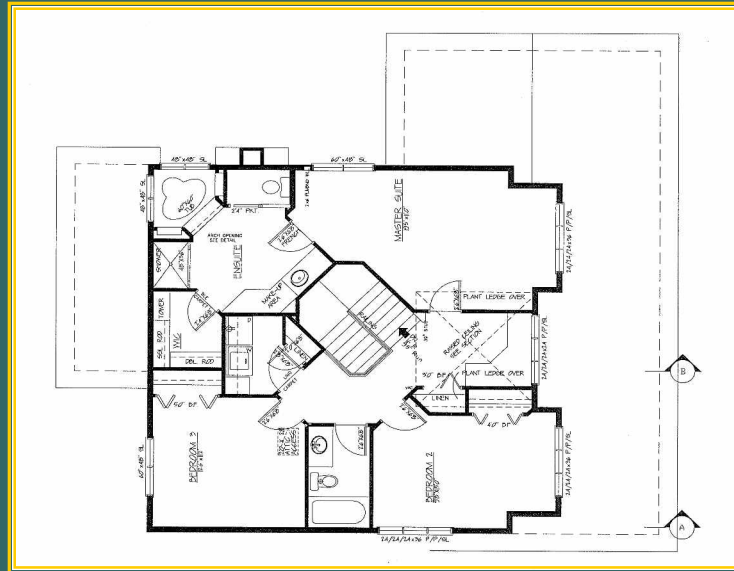
Front Elevation



Rear Elevation



Main Floor Plan @ 1,180sq. ft



Second Floor Plan @ 998

This 2,178sq. ft. plan features two car detached garage with work area. The open floor plan concept that includes kitchen, breakfast nook and family room with gas fireplace affords you, your family and friends the gathering area we all wish we had. Main floor also includes formal dining room, study/home office, walk-in pantry and powder room. Second floor features Master Bedroom with walk-in closet and large five piece ensuite. Two additional bedrooms, main hall bath, laundry room with linen closet round out this exceptional family home. Additional features also include large covered front porch with optional covered dining veranda off dining room, computer work station in second floor hall, full unfinished 971 sq. ft. basement with 9' ceilings, complete landscaping and irrigation package and a low maintenance exterior featuring James Hardie siding. All of our homes are backed through National Home Warranty program.



All floor plans and renderings are artists conception. All floor plan dimensions are approximate only. Exteriors and features may vary depending on lot and options selected. Kentland Homes reserves the right to modify plans and specifications without notice or obligation