

Show Home # 250-764-2199  
5498 Mountainside Drive  
Kelowna BC V1W 5G4  
Open Sat—Thur. 12:00-5:00  
Closed Fridays

# “Westwood”

Please enquire for pricing

**KENTLAND**  
*Homes*

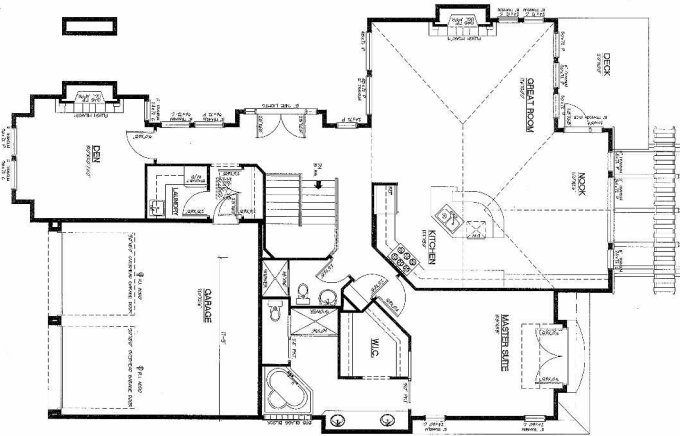
202-5303 Main Street  
Kelowna, BC V1W 4V3  
Office# 250-764-1306  
Fax # 250-764-0996



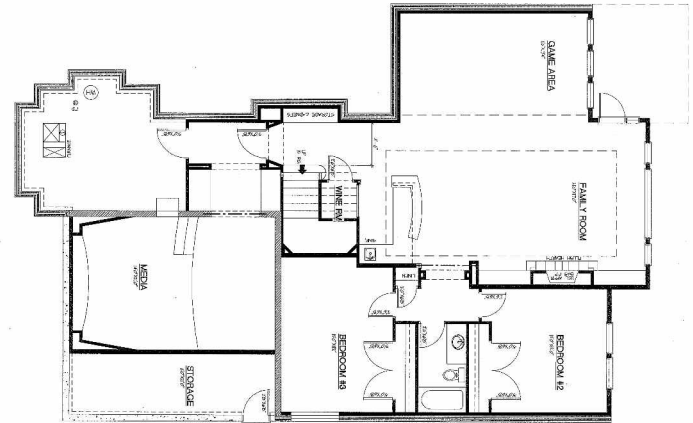
Front Elevation



Rear Elevation



Main Floor Plan @ 1,781 sq. ft



Lower Level Floor Plan @ 1,734

This 3,515 sq. ft. plan features a side entry with a leisure court yard. Master on the main with walk-in closet and 5 piece Ensuite. Main floor also features open floor plan concept with great room, large dining area and gourmet kitchen being the focal areas. Mudroom/laundry combo, den/study with fireplace and powder room. Lower level features large family room/games area with service bar, gas fireplace, wine closet, dedicated Home Theater, two additional bedrooms, full bathroom and indoor/outdoor storage areas. Standard features include full house audio system with receiver, granite counter tops in kitchen with 5 piece Viking appliance package, heated bathroom floors, three gas fireplaces, complete landscaping and irrigation. Low maintenance exteriors featuring James Hardie siding. All our homes are backed through National Home Warranty program.



All floor plans and renderings are artists conception. All floor plan dimensions are approximate only. Exteriors and features may vary depending on lot and options selected. Kentland Homes reserves the right to modify plans and specifications without notice or obligation